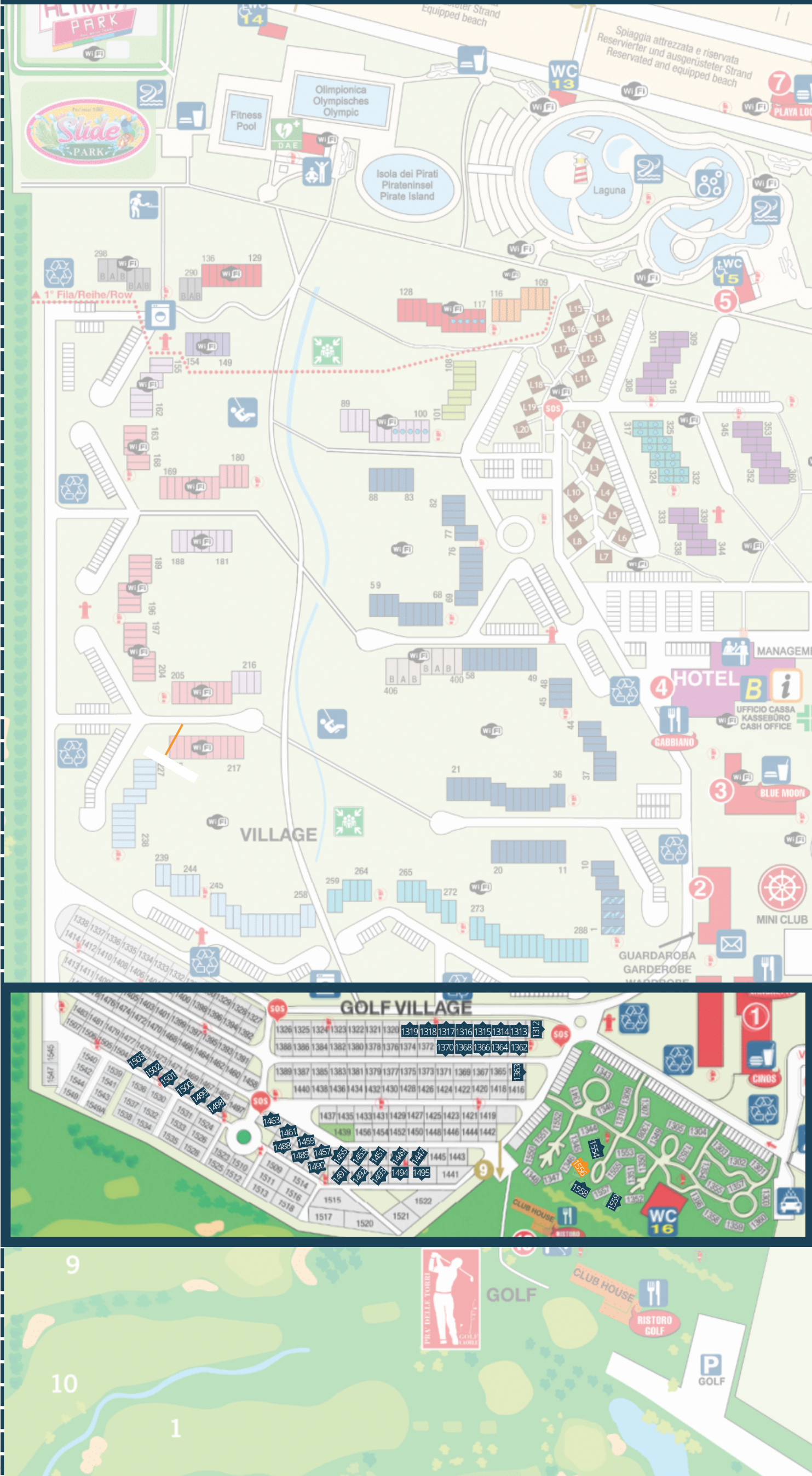


Village



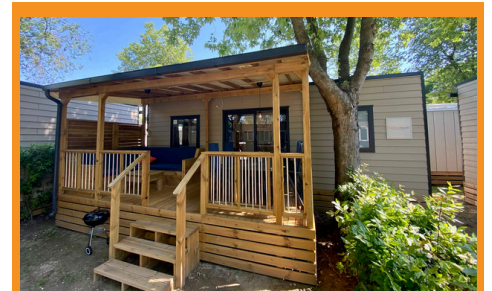
Camping



Estivo travel
LUXURY CAMPING HOLIDAYS
Kempingi Pra delle Torri



Mobile home'y
Estivo Premium Plus



Mobile home'y
Estivo Elegante

Index

- WC 1-4** Servizi Igienici / Sanitary blocks
 - WC 5** Servizi Igienici per disabili / Sanitary blocks for disabled
 - Teatro** Theatre
 - Fantasy World** Mini-Kart
 - Idromassaggio** / **Interswimmassage** Pool with Jacuzzi
 - Cassetta postale** / **Briefkasten** Mail-Box
 - Guardiano notturno** / **Nachtwachman** Nightwatchman
 - B** Bancomat
 - Raccolta differenziata** / **Getrennte Müllsammlung** Separated refuse collection
 - Lavanderia** / **Wäscherei** Laundry
 - Reception** / **Rezeption** 7.00-23.00
 - Giochi per bambini** / **Kinderspielplatz** Children's games
 - Ping Pong**
 - Sport acquatici** / **Wassersports** Watersports
 - Ufficio Animazione** / **Animationsbüro** Animation Office
 - Fermata Autobus** / **Bus Stop** Biglietti / Bus Tickets
 - Treno per bambini** / **Kindertzug** Children's train
 - Palestra attrezzata** / **Fitness Center**
 - Distributore d'acqua potabile** / **Trinkwasserspender** Drinking water dispenser
 - Ristorazione** / **Gaststätte** Restaurants
 - Snack Bar** / **Food Truck**
 - Noleggio cicl** / **Fahrradverleih** Bicycles hire
 - Beach Volley**
 - Golf Club**
 - Camper Service**
 - Autolavaggio** / **Autowaschplatz** Car wash
 - Ufficio Informazioni** / **Informations Büro** Information Office
 - Ricarica auto elettrica** / **Ladestation für Elektroautos** Charging electric car
 - Centro Sportivo** / **Sportanlagen** Sport Center
 - Slide Park** / **Scoioli acquatici** / **Wasserrutschen** Water slides
 - Activity Park** / **Scaladepark** / **Parkour** / **Slackline** / **Bouldering** / **Panna Football** / **Fono** / **Chillhouse**
- EMERGENCY +39 0421 1631322**
- Medico** / **Arzt** Doctor
 - Defibrillatore** / **Defibrillator**
 - Naspi** / **Fire hose** Löschschläuch
 - Idranti** / **Hydrant**
 - Percorso di uscita** / **Notausgang** Exit direction
 - Punto di raccolta** / **Treffpunkt** Gathering point
 - Estintore portatile** / **Feuerlöscher** Extinguisher
 - SOS** / **Chiamata** / **Notruf** Call